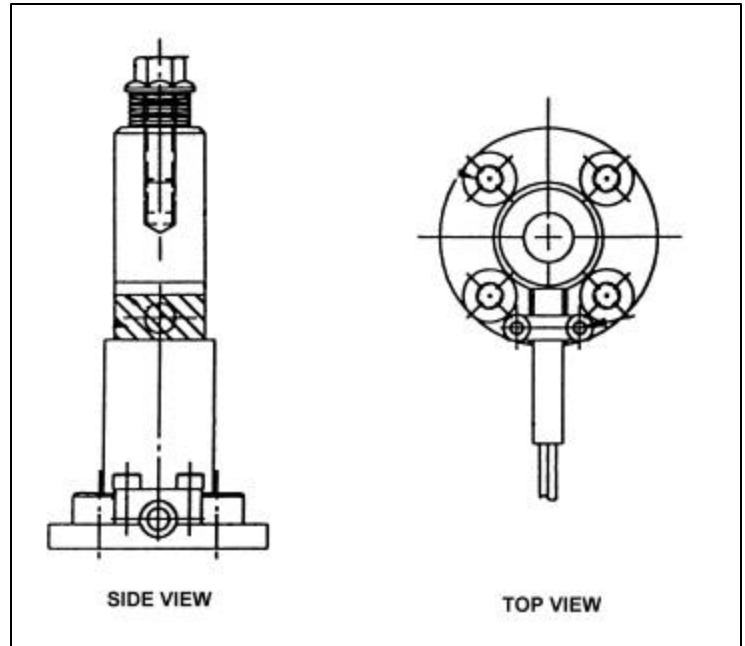

Screwdriver Torque Sensor

This Screwdriver Torque Sensor is ideal for auditing, calibrating, and certifying small screwdriver tools!

- ***Measure and record dynamic torque load characteristics of hand-held or fixtured electric, pneumatic, or mechanical screwdriver torque tools***
- ***Audit and certify screwdriver tools to verify calibration and performance capability***
- ***Washer stack lets you set up a variety of hard or soft joints***
- ***Mounting flange for secure installation in tool shop or on test cart***



The Screwdriver Torque Sensor, when teamed with a Model 920 or Model 960, is ideal for auditing and certifying small power tools and screwdrivers. It comes complete with a mounting flange, washer stack, and captive cable. The Model 920 is a digital instrument for recording peak torque data that can be printed out directly from the instrument or uploaded to a computer. The Model 960 can record the peak data but can also record and plot torque vs. time data for more complete analysis of the tool performance.

SPECIFICATIONS

Part Number 010270-33740
Torque Capacity 50 lb-in (5.6 Nm)
Height 2.50 inches
Width 1.12 inches
Output..... ± 2.0 mV/V, nominal @ Full Scale
Non-linearity..... $\pm 0.25\%$ @ Full Scale
Zero Balance..... $\pm 2\%$ @ Full Scale
Bridge Resistance350 Ohms, nominal
Excitation..... 10 vdc or vac (RMS)
Includes one washer stack set.

Additional information on the Screwdriver Torque Sensors and related instrumentation is available from:



Model 920 Meter

**RS Technologies, Ltd.
24350 Indoplex Circle
Farmington Hills, MI 48335
Telephone: 248-888-8260
Fax: 248-888-8266
Email: info@rstechltd.com
www.rstechltd.com**

