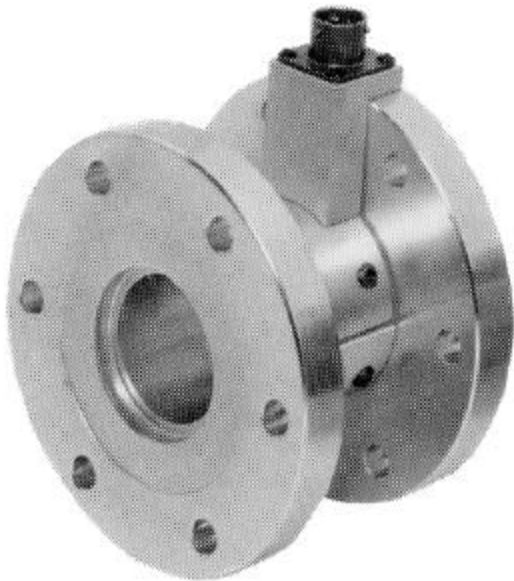

3100 Series Reaction Torque Sensors



Ideal for use in measuring reaction torque in assembly operations!

- ***Measure reaction torque characteristics of assembly operations***
- ***Maintenance free with no moving parts***
- ***Wide variety of standard capacities with custom units available***

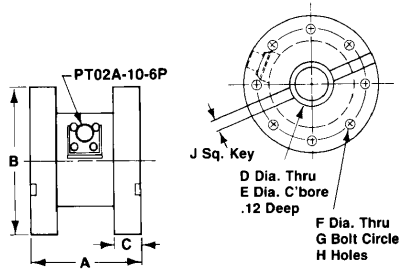
RS Technologies manufactures a complete line of reaction torque sensors in capacities from 50 lb-in up to 250,000 lb-in. Using a full bridge strain gage design, the 3100 Series of reaction torque sensors contains no moving parts and is virtually maintenance free. If one of our standard designs is not suitable for your application, we will provide a quotation for a special unit based on your specific requirements.

When used to support a pneumatic or electric nutrunner, care must be taken to assure that all reaction to the output spindle torque is carried through the transducer. Air or hydraulic hoses, piping, cables, and the mounting design must not offer a secondary path to ground. Side forces and non-flat mounting of flange to flange units should be held to a minimum.

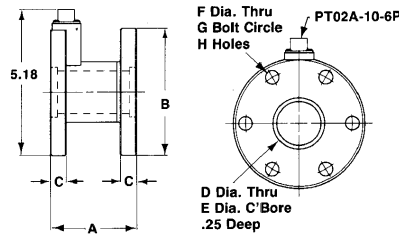
REACTION TORQUE SENSOR SPECIFICATIONS

| | |
|-------------------------------------|--|
| Output at Rated Capacity | 2.0 mV/V, nominal |
| Nonlinearity | ±0.2 % of full scale |
| Overload Capacity | 50% of rated load |
| Excitation Voltage (max.) | 20 vdc or ac rms |
| Bridge Resistance | 350 Ohms, full bridge bonded strain gage |
| Compensated Temperature Range | 25 to 125 °F |
| Useable Temperature Range | 0 to 200 °F |
| Temperature Effect on Output | ±0.01% of reading per °F |
| Temperature Effect on Zero | ±0.01% of reading per °F |

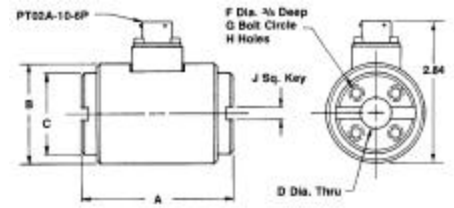
3100 Series Reaction Torque Sensors



Model 3133



Models 3134 and 3136



Model 3122

| Part Number | Rated Capacity | A | B | C | D | E | F | G | H | J | Torsional Stiffness x 10 ⁵ in-lb rad | Flexure Material |
|--------------|---------------------------|------|------|-------|------|------|---------|-------|---|----|---|------------------|
| 073122-00051 | 50 lb-in (5.7 Nm) | 3.00 | 2.00 | 1.625 | 0.62 | -- | 5/16-18 | 1.125 | 4 | ¼ | 0.035 | Aluminum |
| 073122-00101 | 100 lb-in (11.3 Nm) | 3.00 | 2.00 | 1.625 | 0.62 | -- | 5/16-18 | 1.125 | 4 | ¼ | 0.073 | Aluminum |
| 073122-00201 | 200 lb-in (22.6 Nm) | 3.00 | 2.00 | 1.625 | 0.62 | -- | 5/16-18 | 1.125 | 4 | ¼ | 0.196 | Aluminum |
| 073122-00501 | 500 lb-in (56.5 Nm) | 3.00 | 2.00 | 1.625 | 0.50 | -- | 5/16-18 | 1.125 | 4 | ¼ | 2.090 | Steel |
| 073122-00102 | 1,000 lb-in (113 Nm) | 3.00 | 2.00 | 1.625 | 0.50 | -- | 5/16-18 | 1.125 | 4 | ¼ | 3.600 | Steel |
| 073134-00501 | 500 lb-in (56.5 Nm) | 3.00 | 4.47 | 0.56 | 1.50 | 1.75 | 0.344 | 3.625 | 6 | -- | 5.274 | Aluminum |
| 073134-00102 | 1,000 lb-in (113 Nm) | 3.00 | 4.47 | 0.56 | 1.50 | 1.75 | 0.344 | 3.625 | 6 | -- | 7.540 | Aluminum |
| 073134-00202 | 2,000 lb-in (226 Nm) | 3.00 | 4.47 | 0.56 | 1.50 | 1.75 | 0.344 | 3.625 | 6 | -- | 11.978 | Aluminum |
| 073136-00502 | 5,000 lb-in (565 Nm) | 3.00 | 4.47 | 0.56 | 1.50 | 1.75 | 0.531 | 3.625 | 6 | -- | 26.670 | Steel |
| 073136-00103 | 10,000 lb-in (1,130 Nm) | 3.00 | 4.47 | 0.56 | 1.50 | 1.75 | 0.531 | 3.625 | 6 | -- | 46.350 | Steel |
| 073133-00203 | 20,000 lb-in (2,260 Nm) | 4.5 | 6.75 | 1.0 | 2.00 | 2.50 | 0.410 | 5.750 | 8 | ½ | 188.000 | Steel |
| 073133-00503 | 50,000 lb-in (5,650 Nm) | 4.5 | 6.75 | 1.0 | 2.00 | 2.50 | 0.410 | 5.750 | 8 | ½ | 358.000 | Steel |
| 073133-00104 | 100,000 lb-in (11,300 Nm) | 4.5 | 6.75 | 1.0 | 2.00 | 2.50 | 0.410 | 5.750 | 8 | ½ | 661.000 | Steel |

Additional information on the 3100 Series Reaction Torque Sensors is available from:

RS Technologies, Ltd.
 24350 Indoplex Circle
 Farmington Hills, MI 48335
 Telephone: 248-888-8260
 Fax: 248-888-8266
 Email: info@rstechltd.com
www.rstechltd.com

